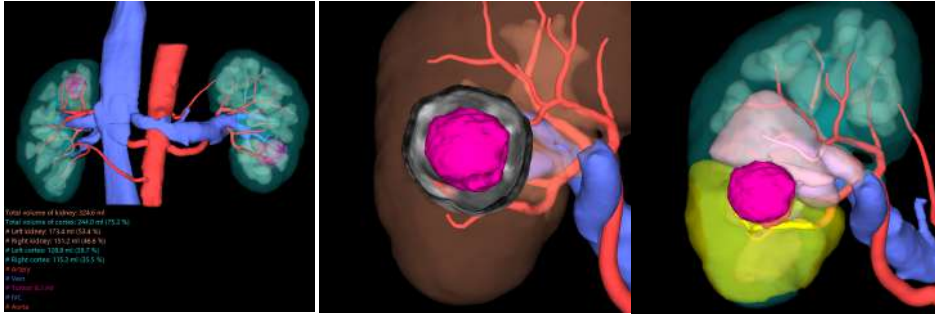


PREPARE FOR SURGERY

visualize your knowledge
quantify your intuition



KIDNEY ANALYSIS



*(L) 3D image
(C) Partial Nephrectomy
Plan
(R) Arterial clamping
area*

Partial Nephrectomy Planning

This software is useful for surgical planning for partial nephrectomy. In addition to being able to simulate partial nephrectomy, the software can simulate selective arterial clamping on the arteries contained in the area to be resected.

It can also automatically separate and display the cortex and medulla of the kidney, providing the actual functional kidney volume in the area of selective arterial clamping or remaining after partial resection.



FUJIFILM

MORE PRODUCT INFORMATION

- ☐ More images
- ☐ Case Study
- ☐ Demo Videos
- ☐ Webinars
- ☐ References



The following are the off-the-shelf software and hardware requirements used for Clinical 3D Base Tools. Please contact with us to refer more details of requirements.

| Server | | Laptop Standalone | |
|------------------------|--|------------------------|---|
| OS | Microsoft® Windows Server® 2019 Standard Edition (x64) | OS | Microsoft® Windows 10 Professional (x64) |
| CPU | Intel® Xeon® Processor 16 cores or more, 2.0GHz processor or greater, 2CPUs or more | CPU | Intel Core i7-7820HQ 2.9GHz or greater, Quad core or more |
| Main memory | 128GB | Main memory | 32 GB or greater |
| HDD | SATA 7200pm For OS and software : 80GB or greater For DB : 500GB or greater For : setting : 100GB or greater For images : depends on the image storage | HDD | 1TB SATA 6.0Gb/s NCQ HDD (7200pm) RAID1 |
| Network adaptor | 1000BASE-T or faster | Network adaptor | 1000BASE-T or faster |
| USB | 1 port | USB | 1 port |
| Graphic | VRAM : 2.0GB or more DirectX 11 is needed | Graphic | VRAM : 1.0GB or more |
| Monitor | SXGA (1280*1024) or larger Single screen | Monitor | 17.3 Inch FullHD (1920x1080) LCD monitor LED backlight |