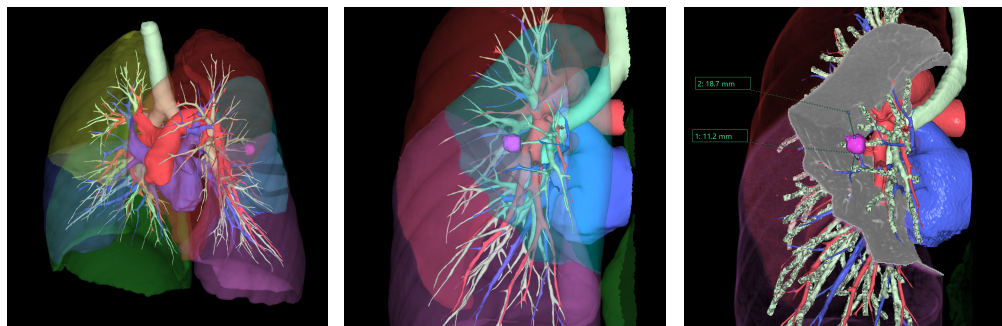


# PREPARE FOR SURGERY

Visualize your knowledge  
quantify your intuition

## LUNG ANALYSIS RESECTION



*(L) 3D Reconstruction image, (C) Sublobectomy Resection, (R) Margin calculation*

### Lung Sublobectomy Simulation

Fujifilm's advanced Clinical 3D software enhances lung Sublobectomy planning so you can confirm the resection area and volume for each patient. It also ensures reliable tumor resection by automatically measuring the distance between the tumor and resection line/tumor and lobe and checking margins.

For more information please contact us

Web : [healthcaresolutions-us.fujifilm.com/clinical-3d](http://healthcaresolutions-us.fujifilm.com/clinical-3d)

**FUJIFILM**

# MORE PRODUCT INFORMATION

☒ More images

☒ Case Study

☒ Demo Videos

☒ Webinars

☒ References



The following are the off-the-shelf software and hardware requirements used for Clinical 3D Base Tools. Please contact with us to refer more details of requirements.

Server	Recommended requirements
OS	Microsoft® Windows Server®2019 Standard Edition (x64)
CPU	Intel® Xeon® Processor 16 cores or more, 2.0GHz processor or greater, 2CPUs or more
Main memory	128GB
HDD	SATA 7200pm For OS and software : 80GB or greater For DB : 500GB or greater For : setting : 100GB or greater For images : depends on the image storage
Network adaptor	1000BASE-T or faster
USB	1 port
Graphic	VRAM : 2.0GB or more DirectX 11 is needed
Monitor	SXGA (1280*1024) or larger Single screen

Laptop Standalone	Recommended requirements
OS	Microsoft® Windows 10 Professional (x64)
CPU	Intel Core i7-7820HQ 2.9GHz or greater, Quad core or more
Main memory	32 GB or grater
HDD	1TB SATA 6.0Gb/s NCQ HDD (7200pm) RAID1
Network adaptor	1000BASE-T or faster
USB	1 port
Graphic	VRAM : 1.0GB or more
Monitor	17.3 Inch FullHD (1920x1080) LCD monitor LED backlight