

FUJIFILM

Value from Innovation

CT · MRI

CT and MRI

Comprehensive Ascent Program (CAP)
for National Rural Health Association providers



See how our versatile medical imaging portfolio enables rural providers to bring the best equipment to their community.

CAP provides cost effective advanced imaging solutions with one low monthly payment.

CAP delivers advanced Technology and Unparalleled Support in One Monthly Payment

Community hospitals in rural areas face many challenges and providing advanced medical imaging should not be one of them. CAP eliminates unbudgeted surprises and reduces costs over the lifetime of the equipment.

All this included in the NRHA package:

- Industry's best 99% Uptime Guarantee
- Expert ACR accreditation support
- Sentinel™ Remote Service Diagnostics
- Reduced pricing on options
- Applicable operating software upgrades
- Unlimited on-site applications support
- Tuition Free Technologist training
- Fujifilm CE accredited training modules
- Customized Advanced Marketing Program tailored to your community



A Better CT Experience
Every Patient, Every Time.

NOW AVAILABLE

Scott County Hospital is equipped with the SCENARIA View CT. Its robust set of features and functions enables high image quality and faster scans across a wide range of clinical applications.

Patients will feel at ease with its spacious and patient-friendly open bore opening. The SCENARIA View is also equipped with a dual GlideTubes that enables easier and more accurate positioning and increased patient comfort.

SCOTT COUNTY HOSPITAL
The Care Starts at Healthcare™

201 Albion Avenue | Scott City, KS | (620) 872-5611 | www.scotthospital.net



You'll Feel Right at Home

At Star Valley Medical Center we want you to feel comfortable. That's why we installed the Ocal.

With a 74 cm ultrawide bore, the Ocal is the widest MRI system on the market. Designed around the human body, it provides the optimal patient experience with outstanding comfort, space, and efficiency.

To learn how the Ocal can benefit you and your family, visit www.omegajoy.org or call 307.855.5880.

Star Valley Medical Center

COMPREHENSIVE ASCENT PROGRAM

Fujifilm -Your Gold Medal Partner

Fujifilm was selected as a Gold Partner of the National Rural Health Association based on our expertise and knowledge of the rural health industry.

We demonstrate our commitment by offering the highest level of image quality, pricing and excellent customer service.

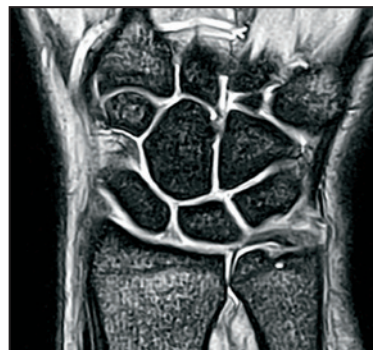
Customer-first philosophy compels us to make customer support the most important thing we offer.



MRI & CT:

- Echelon Oval 74cm Wide Bore 1.5T MRI
- Scenaria SE 64/128 Slice CT
- Supria True 64 CT
- Supria Plus 16/32 Slice CT

Partnership





CT & MRI

COMPREHENSIVE ASCENT PROGRAM

Enhancing the patient experience is a priority. Fujifilm designs our diagnostic imaging equipment to accommodate a variety of body types as well as those patients with anxiety and claustrophobia.

Adding Fujifilm's high performance equipment to your community helps reduce patient leakage to large hospital networks in urban areas.

Fujifilm's SynergyDrive is the latest in complete efficiency and workflow engines ensuring the fastest patient throughput, best patient comfort and highest quality imaging.



Scenaria View CT

- Comfortable and spacious, 80cm wide aperture
- Table accommodates 550lbs
- Lateral table shift + 10cm for easier and more accurate positioning
- Compact design fits into a small 285sq.ft. space
- Reduced examination times



Echelon Oval MRI

- Widest 1.5T bore, 74cm
- Feet First Imaging, including brains
- Table accommodates 550lbs
- Table width 63cm
- Reduced Examination Times, including 5 minute brains
- Highest uniformity for detailed image quality



Contact your Fujifilm Sales Executive for details.

FUJIFILM Healthcare Americas Corporation

81 Hartwell Avenue, Suite 300, Lexington, MA 02421

www.fujifilmusa.com

800.431.1850

©2021 FUJIFILM Healthcare Americas Corporation

DOC-0049214-B | DM#141951v4 0921

FUJIFILM
Value from Innovation